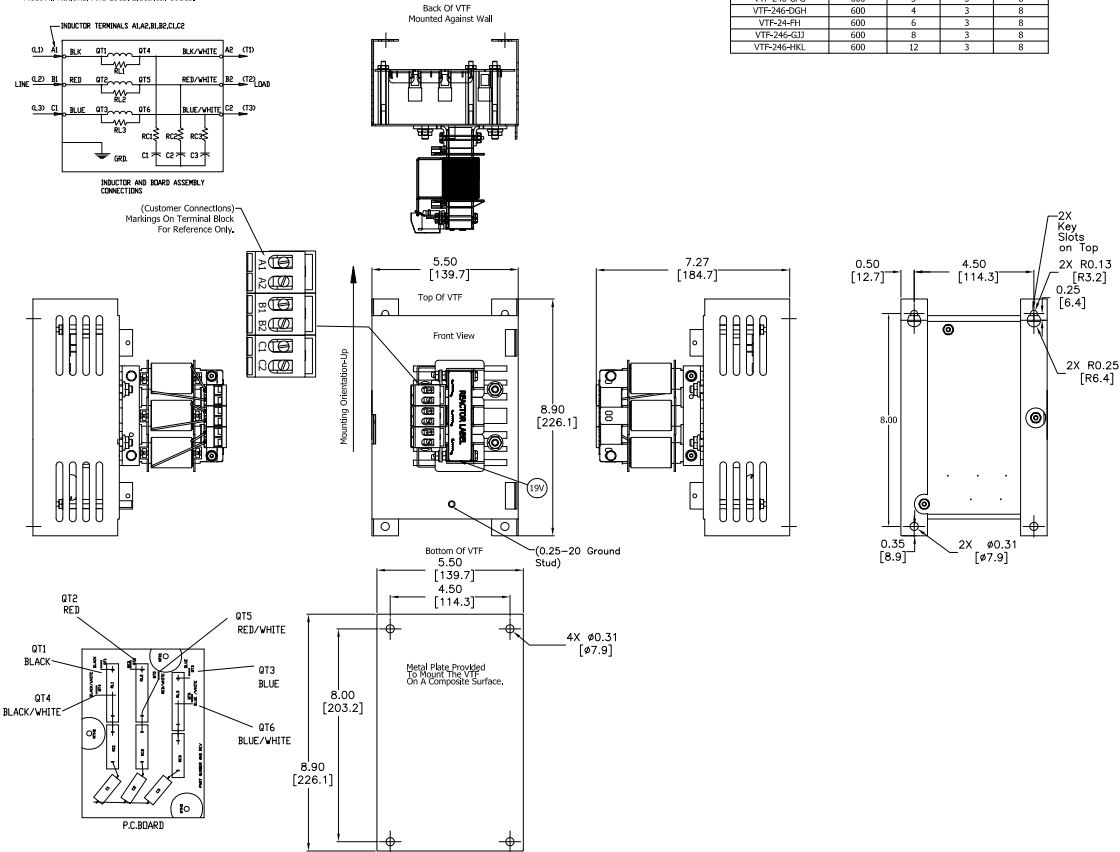


See VTF Installation Guide For Terminal Wire Size And Torque Information.
 Note: Maintain Clearance of 3 Inches On All Sides To Other Equipment.
 Customer Is Responsible For Installation to Meet All National And Local Electrical Codes.

Automation Direct Part#	Rated Voltage	Amps	Phase	Weight (LBS)
VTF-46-DE	600	2	3	8
VTF-246-CFG	600	3	3	8
VTF-246-DGH	600	4	3	8
VTF-246-FH	600	5	3	8
VTF-246-GJ	600	8	3	8
VTF-246-HKL	600	12	3	8



NOTES:

1. DIMENSIONS CAN BE CHANGED BY MANUFACTURER WITHOUT NOTICE.
2. DIMENSIONS DO NOT IMPLY TOLERANCE.

VTF-246-DGH

Units: inches [mm]
 Scale: Full

**VTF SERIES OUTPUT FILTER,
 230/460/575 VAC, 3/4HP, 2HP, 3HP,
 3-PHASE, 4A, OUTPUT SIDE ONLY**

AUTOMATIONDIRECT.com